

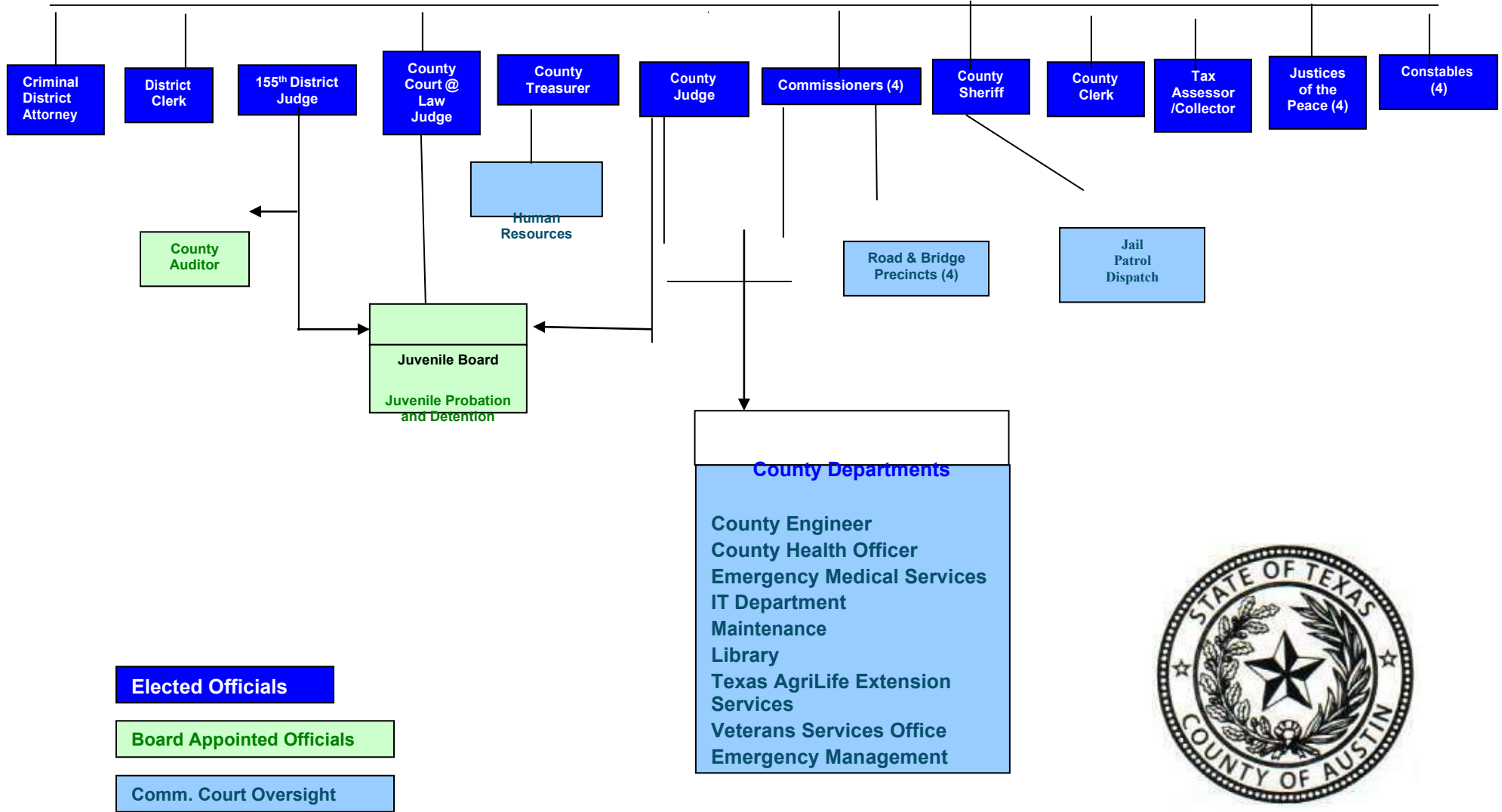
2.8 CHAIN OF COMMAND

Individual county employees are responsible to the supervising elected or appointed Department Head or to a supervisor designated by the Elected Official or Department Head. Elected Officials are responsible to county voters. Directions regarding work to be done, expected results, the adequacy of work performance, and grievances will follow the chain of command.

From time to time, an employee may be given directions from persons other than his or her immediate supervisor or elected or appointed Department Head. In such cases, it is the employee's responsibility to notify his or her immediate supervisor about the direction, its purpose, and the relevant facts of the situation. Failure to do so in a timely manner may result in disciplinary action.

Austin County Organization Chart

Austin County Citizens



Direction of Authority →